



Richards-Wilcox™
Garage Doors

ROLLTITE™



R424, R422, R420 & R418

ROLLING STEEL DOORS

R-W R400 SERIES HEAVY DUTY ROLLING SERVICE DOOR is produced with the highest quality and durability in the industry. The 400 Series consists of 3" — 24, 22, 20, or 18-gauge slats with a flat, curved, or perforated profile. The 400 Series is available in sizes up to 40' wide or 30' high (varies by model). The 400 Series is the perfect choice for industrial, commercial, or high cycle applications.

Standard Features

- Enclosed hood
- Reduction gear chain hoist
- 3-piece structural steel guides
- Double angle bottom bar with astragal
- **2-year limited warranty**
- Guides, bottom bars, and headplates are powder coated black at the factory

400 SERIES ROLLING SERVICE DOOR

MODEL R424 (24-GAUGE SLAT), MODEL R422 (22-GAUGE SLAT)

MODEL R420 (20-GAUGE SLAT), MODEL 418 (18-GAUGE SLAT),

MODEL 416A (16-GAUGE SLAT, ALUMINUM) Flat or Curved Profile (specify when ordering)

PRODUCT SPECIFICATIONS



Hoods

24-gauge galvanized steel with baked epoxy primer and baked polyester topcoat designed to enclose door coil. Reinforcing to be 1/4" thick steel brackets for door over 16'0" wide.

Hand Chain Lock

Lockable bracket mounted on guide angle or wall suitable for padlocking (padlock by others).

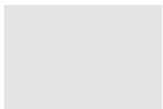
Operation

Standard drive to consist of roller chains and sprockets. Hand chain to be galvanized machine link.

Springs

Springs are to be mounted on a cold rolled steel inner shaft. End bearing to be self-lubricating ball bearings.

Finish



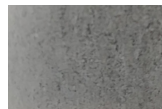
White Topcoat



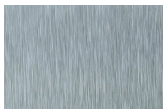
Gray Topcoat



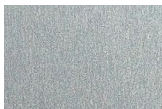
Tan Topcoat



Galvanized



Stainless Steel



Aluminum



Powder Coat Finish is available in a variety of color options. 40-year film integrity and a 35-year no-chalk/no-fade limited paint warranty.

Options

Electric Operation: Easy fast motorized operation at a push of a button (motor mounting plates available upon request).

Slide Bolt Locks: Dual steel slide bolt locks attached to bottom suitable for padlocks (padlocks by other) (standard for manual push-up operation).

Vision Panels: 5" x 3/4" cut out spaced approximately 3" apart and covered with clear Lexan (Flat Slat Only).

Hood Baffle: 8" wide PVC rubber riveted to the inside of the hood.

Guide Weather Seal: One-piece vinyl weather seal attached to door guide on the non-coil side (brush seal with retainer available upon request).

Insulation (Steel Backed): Refer to 600 series.

Windload: Available design to +/- 45 PSF for 16'0" wide (test size). Windload varies by model; for windload availability on larger sizes contact customer service.

High Cycle Springs: Available in 50,000 cycles and 100,000 cycles.

Slats

24, 22, 20, or 18-gauge slats are manufactured from full hard galvanized grade 80 steel and coated with Super Durable polyester paint that is backed by a 40-year film integrity and 35-year no-fade limited paint warranty.

Drum/Axle Assembly

Barrel to be a steel pipe of diameter and wall thickness to restrict maximum deflection to .03" per foot width. Springs to be oil tempered grease packed helical torsion type designed to cycle 100,000 times with an overload factor of 25%.

Guides

Guide angles to be 3/16" minimum thickness structural steel with 30" service cutout and removable headstops. Guide depth to provide slat penetration adequate to satisfy specified wind loading.

Bottom Bar

Curtain to be reinforced with a bottom bar consisting of two 2" x 2" x 1/8" structural steel angles with PVC bulb astragal.

Endlocks

Each end of alternate slats to be fitted with end locks to provide a wearing surface in the guides and maintain slat alignment. Fastened with 1/4" or 3/16" rivets. Windlocks provided on larger sizes.



Richards-Wilcox
Garage Doors

1-800-667-1572 ■ www.rwdoors.com